

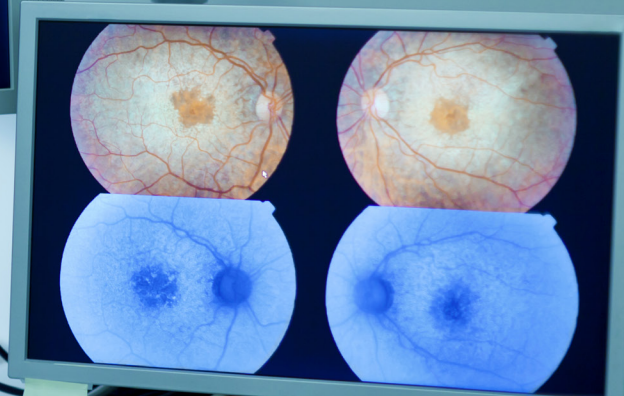


THE UNIVERSITY OF
MELBOURNE



CENTRE FOR
Eye Research
Australia

Mobile Learning Unit
Melbourne Medical School



Age-Related Macular Degeneration for Primary Eyecare Practitioners

This e-learning course developed in collaboration with the Centre for Eye Research Australia, provides an evidence-based update for practicing clinicians, trainees and students.

There have been significant advances in the diagnosis and management of age-related macular degeneration (AMD) in the past few years. AMD is the most common cause of vision impairment in people over the age of 50 years, affecting almost 200 million people worldwide.

This e-learning course provides an evidence-based update for practicing clinicians, trainees and students. The course will upskill you on the use of new imaging tools, the interpretation of novel clinical biomarkers, and the use of visual assessments in the clinic.

It will focus on improving your patient management, including information on how to advise people with AMD on the newest emerging treatments and technologies that could improve their quality of life.

Designed For

This course is suitable for primary eyecare practitioners, particularly optometrists. It may also be of interest to general practitioners, ophthalmic nurses and orthoptists.



Convenience

Fully online. Study online on web and mobile



Reinforcement

8 interactive tutorials and 10 case studies to practise interpretation



Recognition

Certificate of Completion issued upon course completion.



Online Support

We provide technical assistance and student academic support

For more information, visit go.unimelb.edu.au/4emr



Course Outline

Course units

- Tutorial 1: Introduction to AMD
- Tutorial 2: Histopathology and Pathogenesis of AMD
- Tutorial 3: Classification of AMD Using Multimodal Imaging
- Tutorial 4: Functional Assessment in AMD
- Tutorial 5: Non-Neovascular AMD
- Tutorial 6: Neovascular AMD
- Tutorial 7: Differential Diagnoses of AMD
- Tutorial 8: Future Directions and Other Resources

Assessment and Accreditation

The assessment includes the submission of 8 units of self-assessment and 10 case studies. A Certificate of Completion is provided upon satisfactory completion of the course.

Optometry Australia Institute of Excellence Quality Assurance

This online course has been approved for OA Institute of Excellence Quality Assurance by Optometry Australia to meet the requirements for 2020-2021, which contains 16.5 CPD points.



16.5

Course fees

Full fee

AUD \$150 (incl. GST)

Student Discount fee:

AUD \$99 (incl. GST)

(Applies to domestic and international students. Students will be required to upload relevant supporting documentation during the registration process.)

There are no set entry requirements for this course.

Delivery mode

Fully online. Course completion requires approximately 10 hours of eLearning.

How to apply

Enrol at the link below.

▶ go.unimelb.edu.au/4emr

Get in touch

▶ medicine.unimelb.edu.au/mlu

✉ mobile-learning@unimelb.edu.au

☎ +61 3 8344 5673

🖥 For more information, visit go.unimelb.edu.au/4emr



THE UNIVERSITY OF
MELBOURNE